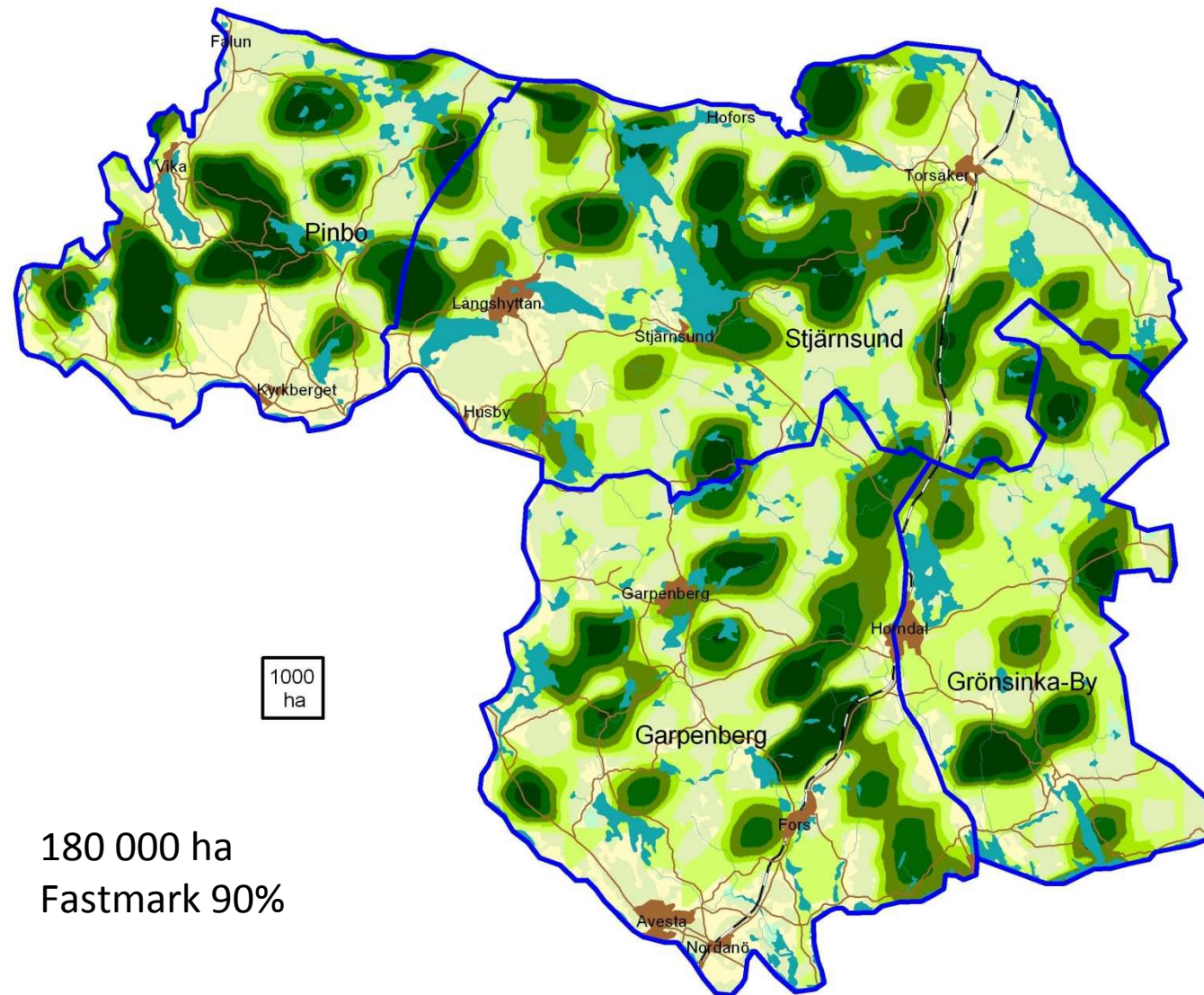


Älgdemografi

	Garpenberg	Grönsinka-By	Pinbo	Stjärnsund
Antal älgar	497	299	410	665
Älgar per 1000 ha	9,5	10,2	12,6	9,8
Älgar per 1000 ha fastmark	10,4	11,1	13,8	11,1
Älgar per 1000 ha skogsmark	13,0	12,5	19,6	12,8
Antal tjurar	177	97	141	194
Antal kor	191	97	170	294
Antal kalvar	129	106	99	177
Kalv per ko	0,68	1,09	0,58	0,60
Kalv per vuxen	0,35	0,55	0,32	0,36
Andel kor utan kalv	46%	19%	53%	54%
Andel kor med 1 kalv	40%	54%	34%	32%
Andel kor med 2 kalvar	14%	27%	13%	14%
Könskvot	48%	50%	45%	40%
Areal km	524	293	325	678
Andel fastmark	91%	92%	91%	89%
Andel skogsmark	73%	82%	64%	77%

Gävle-Dala södra (med delområden)

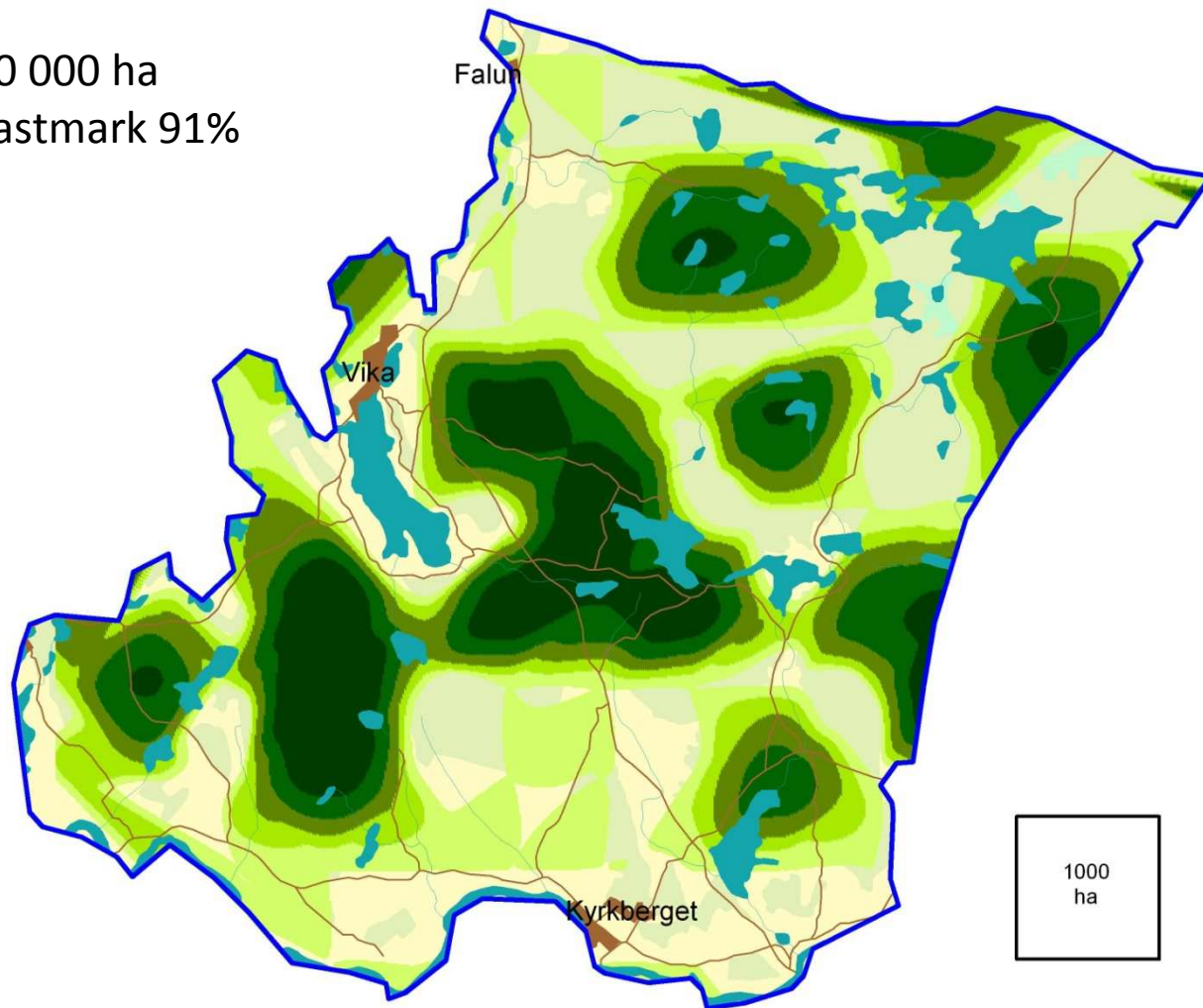


180 000 ha
Fastmark 90%

Pinbo

30 000 ha

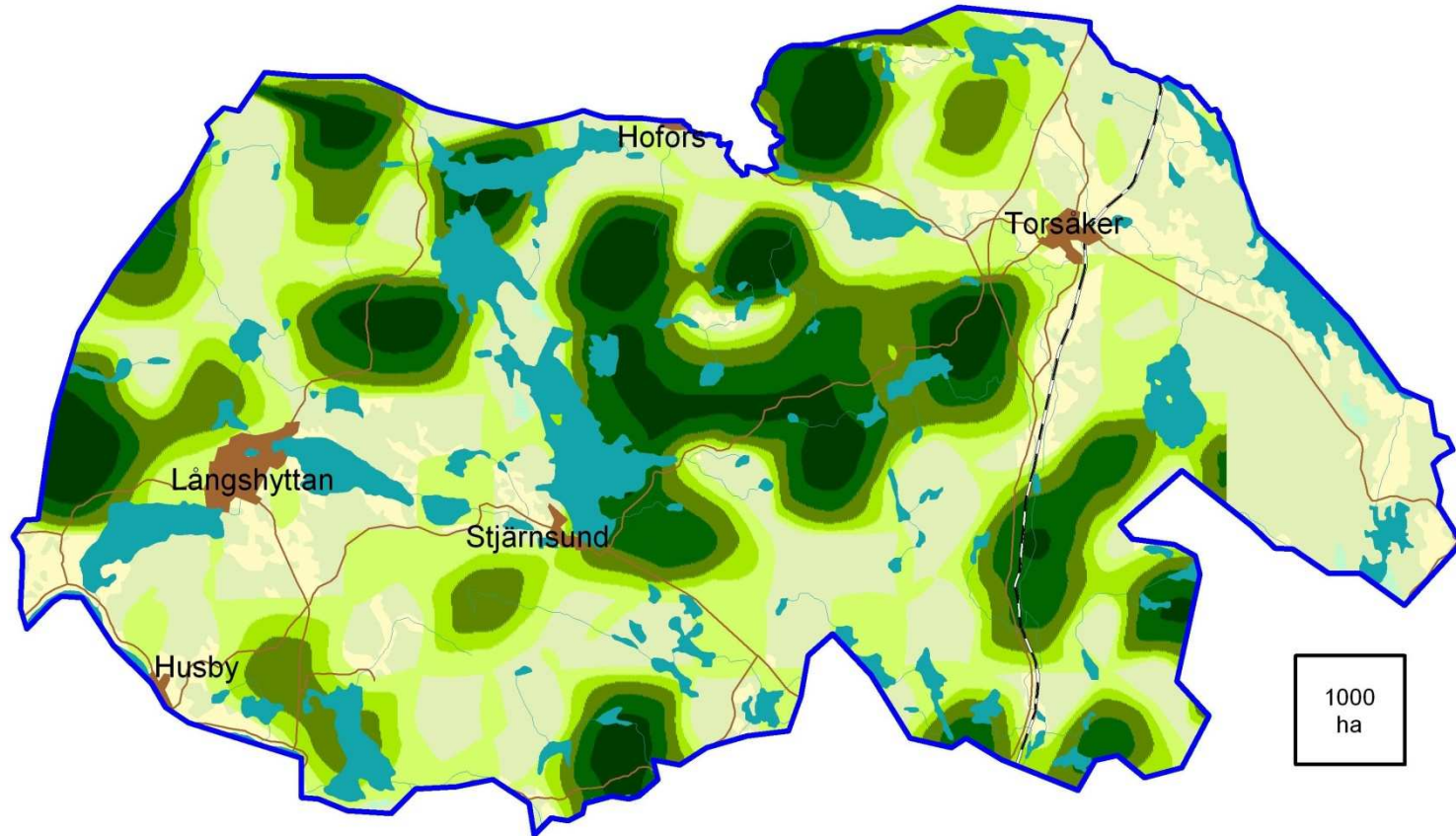
Fastmark 91%



Stjärnsund

70 000 ha

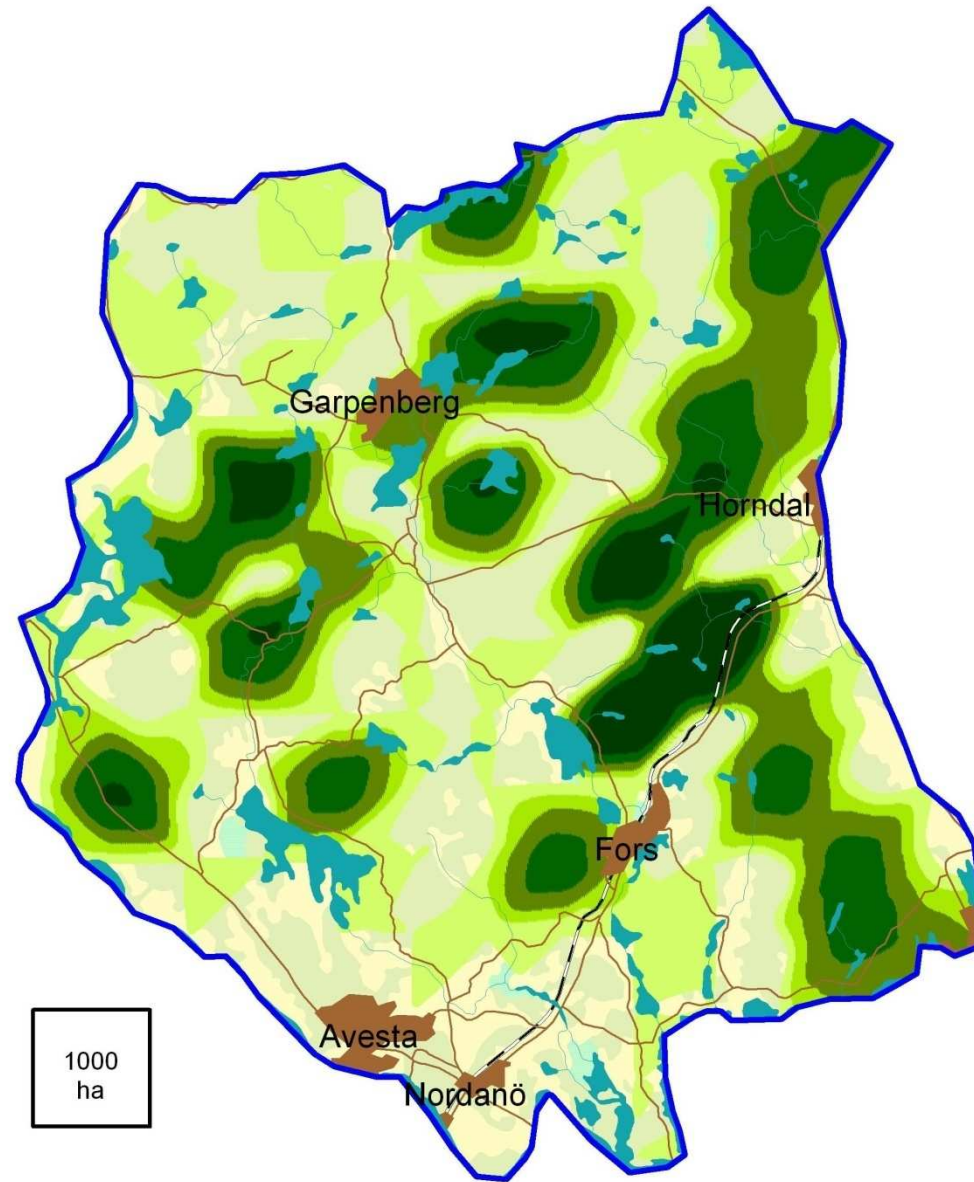
Fastmark 89%



Garpenberg

50 000 ha

Fastmark 91%



Grönsinka-By

30 000 ha

Fastmark 92%

